

The all new EAGLE® | NX TORSO ROTATION

15-piece strength line featuring restyled aesthetics, refined movements, and reimagined user features designed to provide all users with progressive training options.

FEATURES



1. Dual Angled Foot Pegs and Thigh Pads: Stabilize hips and legs, ensures proper torso movement, and maintains spinal alignment.

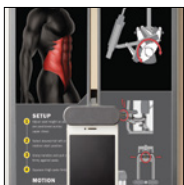


2. 17 Starting Positions: Provided every 10-degrees in each direction for user comfort and exercise goals.



3. Top Pivot Design: With a fixed lower body allows the head to lead and trains the torso muscles used in daily activities.

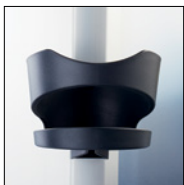
USER AMENITIES



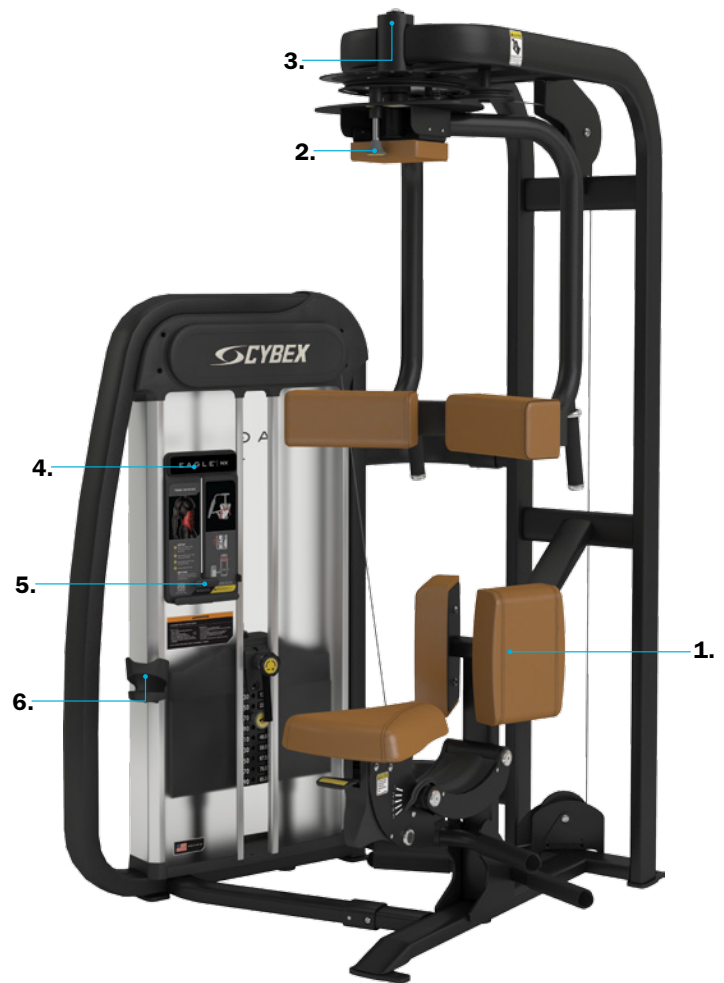
4. Placards: Review proper set-up, movement and muscles trained. QR codes provide access to step-by-step videos demonstrating correct form and multiple exercise options.



5. Smartphone/tablet holder: Your mobile device is safe and secure with our adjustable clip, designed for all smartphones and tablets. Simply clip in and go.



6. Water bottle/towel holder: Keep your water and towel in arm's reach with our convenient water bottle and towel holder, standard on every Eagle machine.



Visit our website for instructional videos on standard and advanced movements.



SPECIFICATIONS

Product Number	20190
Dimensions L x W x H	46" x 47" x 79" (117 cm x 119 cm x 200 cm)
Weight Stack	305 lbs (139 kg)
Machine Weight	574 lbs (261 kg)
Color	Available in 15 frame colors or a virtually unlimited variety of custom colors, 33 upholstery colors and 4 enclosure styles

Upgrade your club with customized Eagle NX equipment. Visit mydesign.cybexintl.com

MY
DESIGN
STUDIO



Download the Eagle app for access to instructional videos.

WORLD HEADQUARTERS
10 Trotter Drive · Medway · MA 02053 USA
T + 1.508.533.4300 · F + 1.508.533.5500
cybexintl.com

CYBEX INTERNATIONAL UK LTD
Premier House · Beveridge Lane
Bardon Hill · Coalville · LE67 1TB UK
T + 44.845.606.0228 · F + 44.845.606.0227

CYBEX PRODUCTS ARE DESIGNED
AND BUILT IN THE USA

