

The all new EAGLE® | NX LEG PRESS

15-piece strength line featuring restyled aesthetics, refined movements, and reimagined user features designed to provide all users with progressive training options.

FEATURES



1. Greater Range of Motion:

Seat back angle adjusts to five positions, providing comfort and greater range of motion.



2. More Complete Training:

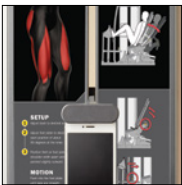
Articulating carriage moves backward and tilts for greater range of motion and complete training of glutes and hamstrings.



3. Safe and Controlled:

Designed to replicate a safe, controlled squat.

USER AMENITIES



4. Placards: Review proper set-up, movement and muscles trained. QR codes provide access to step-by-step videos demonstrating correct form and multiple exercise options.



5. Smartphone/tablet holder:

Your mobile device is safe and secure with our adjustable clip, designed for all smartphones and tablets. Simply clip in and go.



6. Water bottle/towel holder: Keep your water and towel in arm's reach with our convenient water bottle and towel holder, standard on every Eagle machine.



Visit our website for instructional videos on standard and advanced movements.



SPECIFICATIONS

Product Number	20040
Dimensions L x W x H	68" x 42" x 73" (172 cm x 106 cm x 185 cm)
Weight Stack	505 lbs (230 kg)
Machine Weight	1020 lbs (464 kg)
Color	Available in 15 frame colors or a virtually unlimited variety of custom colors, 33 upholstery colors and 4 enclosure styles

Upgrade your club with customized Eagle NX equipment. Visit mydesign.cybexintl.com

MY
DESIGN
STUDIO



Download the Eagle app for access to instructional videos.

WORLD HEADQUARTERS

10 Trotter Drive · Medway · MA 02053 USA
T + 1.508.533.4300 · F + 1.508.533.5500
cybexintl.com

CYBEX INTERNATIONAL UK LTD

Premier House · Beveridge Lane
Bardon Hill · Coalville · LE67 1TB UK
T + 44.845.606.0228 · F + 44.845.606.0227

CYBEX PRODUCTS ARE DESIGNED
AND BUILT IN THE USA

